

REthinking Craft Time:

Recycled Art
Community Partnerships
Zero-Waste Programming



About Us

Cheryl Martin

Library Services Specialist, North Olympic Library System

MLS student, SLIM Portland, Emporia State University

cmartin@nols.org www.nols.org

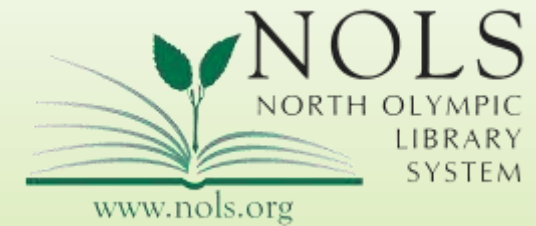
Megan Davis

Clallam County Waste Reduction Coordinator

Clallam County Waste Prevention Program & WSU Extension

mdavis@co.Clallam.wa.us

www.extension.wsu.edu/clallam/waste-reduction-program/



REthinking Craft Time - Program

- ☐ Creativiteas
- ☐ Community Partnerships – Connecting with your community
- ☐ Zero-Waste Programming – Clallam County Waste Reduction
- ☐ Recycled Art – Fresh program ideas and hands-on activity

Creativitea Program History

Modeled after Paint 'n Sips



Artist Led



Staff Led

Holiday Papercrafts Creativitea



Community Partnership

Two community organizations



Same

Program Idea

Similar
Goals



Creativiteas – bright ideas in the making



**Glass Jar
Terrariums**

Two Branches

**Outside the Box
Thinking**



REthink Fair!



- Hosted by the library
- Partnership with NOAA AmeriCorps
- 10 + community partners
- Share Community Resources
- Education, outreach, and activities



Building Community Partnerships & Collaborations

Rethink Fair Partners

Clallam County Solid Waste

WSU Extension

Americorps

National Oceanic and Atmospheric Administration (NOAA)

Olympic Coast Marine Sanctuary

Olympic National Park

Surfriders

Peninsula College

ARTC

Sequim Maker Space

Feiro Marine Life Center

Government

City/County/State/Federal

Local Tribal Organizations

Education/Schools

Local Businesses

Clubs & Non-profits

Community Organizations

[Communications and Partnerships – Tools](#)



Communication and Partnerships - Tools

by TechSoup for Libraries

Last Modified: 21 March 2012

The essence of collaboration is suggested by the word itself. Collaboration is about co-labor; it occurs when people from different organizations work together through shared efforts, resources and ownership of a common goal. Strong partnerships occur between organizations with similar backgrounds; clear loyalties and interests; clear communication channels; responsibility and accountability for success and sharing of resources, risks, and rewards. The following tools are designed to help you form strong, collaborative partnerships inside and outside of your organization.

[Compatible Library Partners Chart](#)

[What to Consider When Entering into a Collaborative Process](#)

[Tips and Techniques for Creating Strong Partnerships](#)

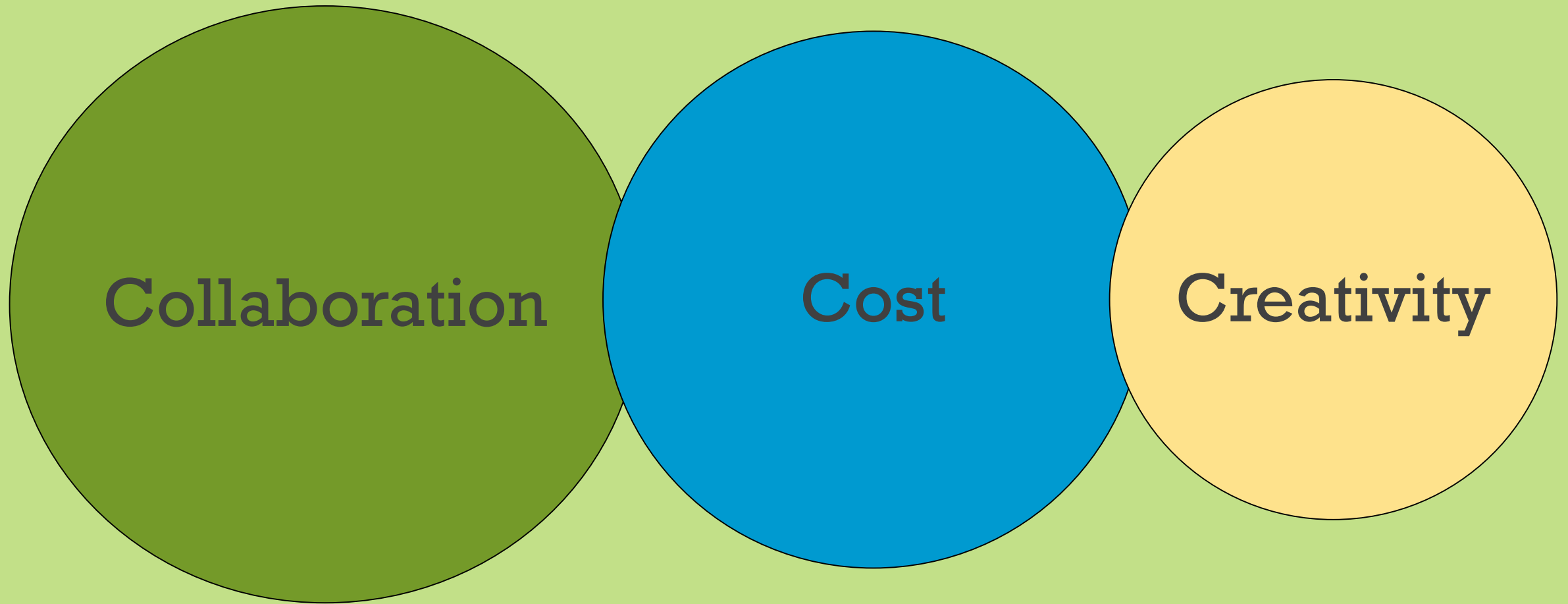
[Ten Examples of Successful Library Collaborative Projects](#)

▼ Related Topics

[Partnerships & Collaboration](#)

Compatible Library Partners Chart

Three “C’s” for program planning



Collaboration

- *Is it already being done?*
- *Is it being offered for free?*
- *Can the library provide the space?*
- *Can the library help with the cost?*
- *Identify common goals*

Partnerships in
programming make sense

You don't have to reinvent
the wheel

Cost

Staff costs are often overlooked

- *Reuse and Repurpose*
- *Outside talent*
- *Minimize supplies*
- *Reduce staff time*

Creativity

- *Connect with your community*
- *Tap into others talents*
- *Keep your eyes and ears open*

Be willing to
share the
programming
“spotlight”



**CLALLAM
COUNTY WASTE
PREVENTION
PROGRAM**



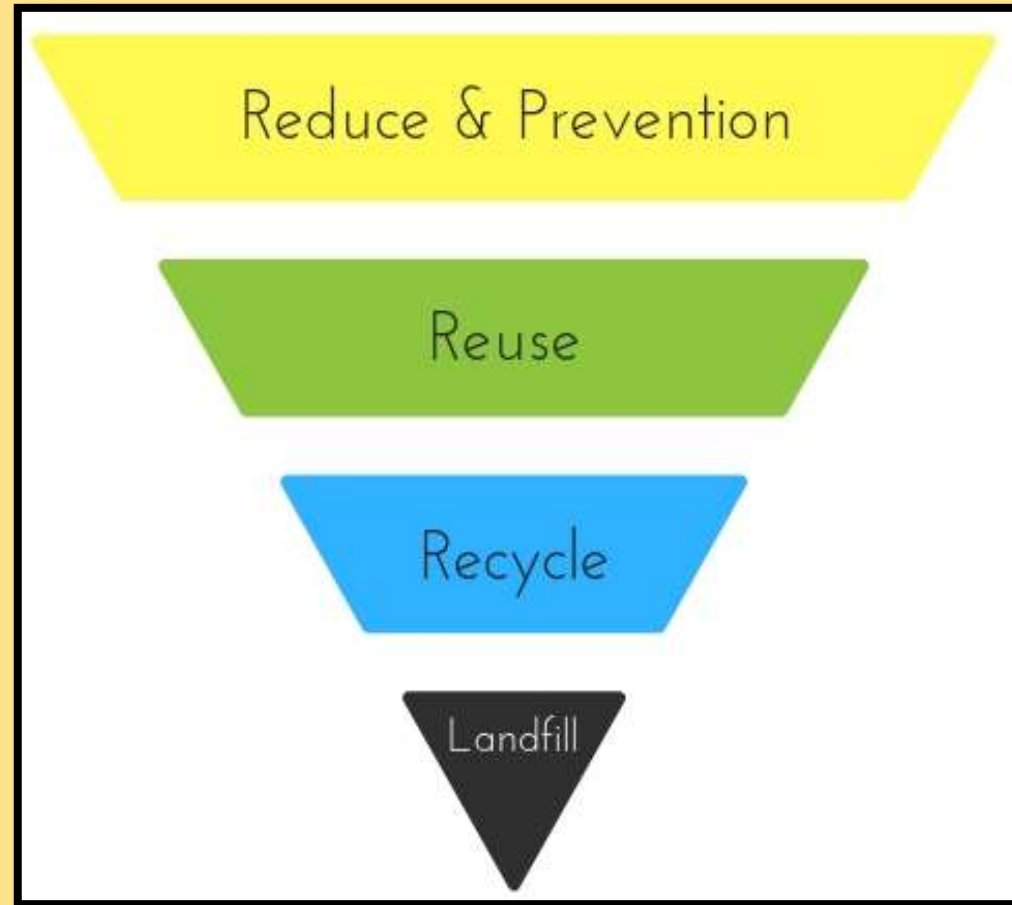
WASHINGTON STATE UNIVERSITY
 **CLALLAM COUNTY EXTENSION**

Let's get Waste Wise

- We live in a throw-away society!
- The average person throws out 4 lbs. of waste every day.
- Much of this waste has beneficial uses.



Putting That “Waste” To REuse



How we do it

- Master Compost +Recycler Program
- Educational Resources
- Waste Audit & Operation Improvements
- Food Recovery & Donation
- Reuse & DIY Workshops
- Materials Collection
- Zero Waste Party Kit
- Connection & Partnerships



Connections & Partnerships



**North Olympic Library
System**

Community
Partnerships

Library
Patrons

Creativitea!

Outreach &
Sustainability
Education

**Clallam
County
Waste
Prevention**

**Community
Members**



Zero-Waste Events



Create Your Own



- For your office meetings or events
- For your community to rent
- Put together with thrift store finds

Total cost of kit (for 15 people): ~ \$50

Average cost (per person/event): ~ \$1.5

Pays for itself after 3 events!



Materials Collection

Diverting Materials

- Preventing waste through collection and re-use!
- Materials collected are for residents, teachers, and used for re-use workshops
- Easy to start your own!



Why It Matters

- Keep program costs low
- Benefits your community
- Reduce your environmental impact
- Educational opportunity



Reuse For Art's Sake!



What will you create!?

Repurposed Art

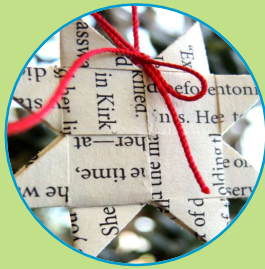
- Fresh program ideas
- Hands-on activity



Bright ideas for repurposed crafts



Terrariums



Holiday Crafts



**Artist Trading
Cards**



**Nuts and Bolts
Jewelry**



**Pill Bottle
Crafts**



**Repurposed
Book Art**

Zero Waste Program Ideas

Zero Waste Creativiteas and Crafts

Trashy Fashion – Halloween Costumes



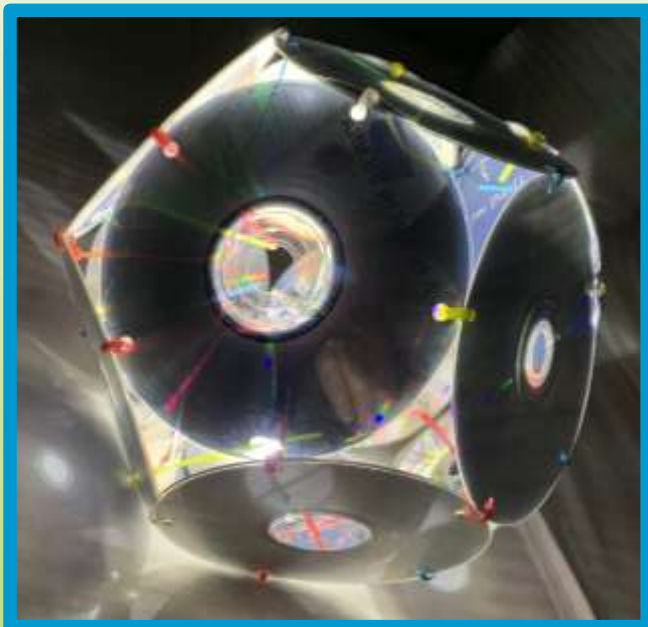
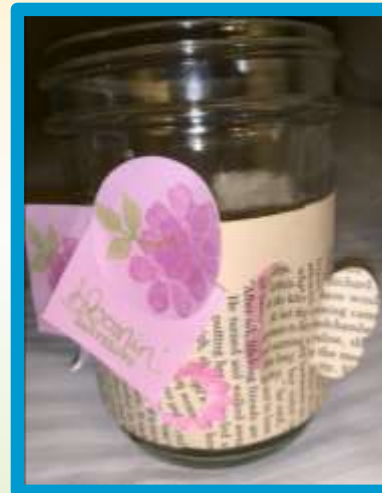
Glass Jar Decorated Terrariums



Holiday Creativitea and Zero Waste Gift Wrapping

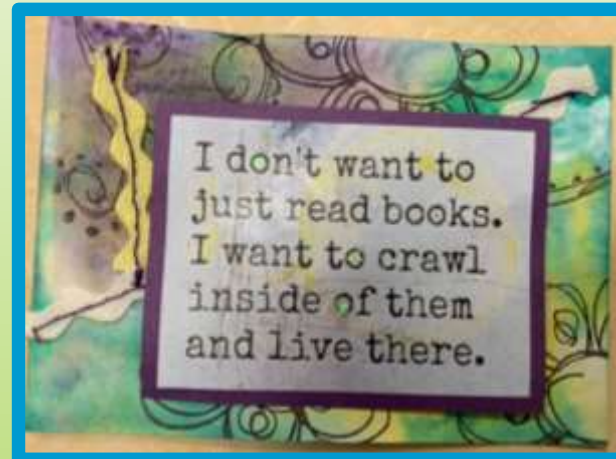
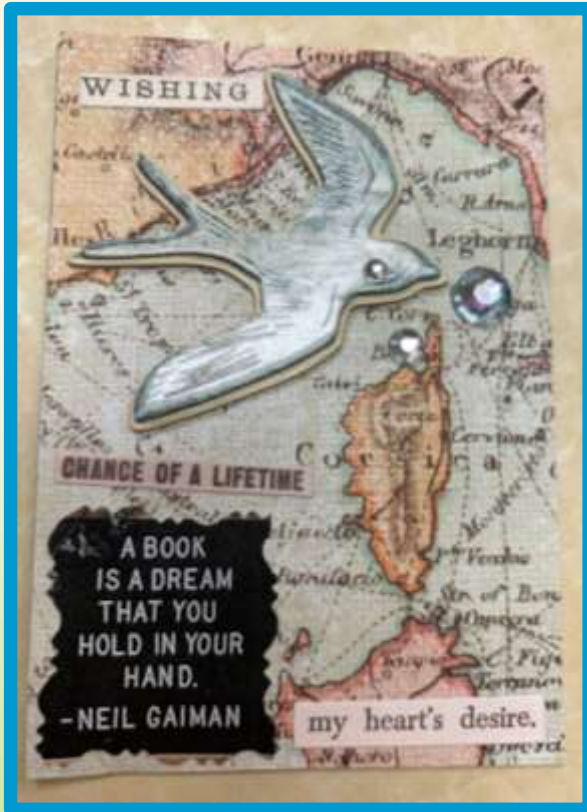


Repurposed Crafts – Books and More



Artist Trading Cards

Libraries Across America ATC SWAP



Thanks for



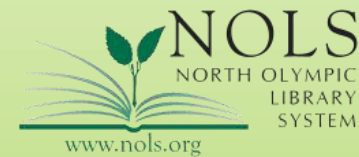
ING

with us

Contact Us:

Cheryl Martin cmartin@nols.org

Megan Davis mdavis@co.clallam.wa.us



Artist Trading Cards How-To for WLA

- Select 2 cards for background
- Select a quote or image from suggested ideas or come up with one of your own.
- Select colored paper and/or embellishments
- Choose “medium” – markers, colored pencils, stamps, watercolor crayons, etc.
- Draw, decorate, embellish & assemble using adhesives
- Write your name, the date, your library/affiliation on back.
- Keep one and add one to the trading card holders up front.