

WALE

Washington Library Employees ~ Newsletter

WALE...

Our Purpose:

To build a communication network among library employees

- To encourage continuing education for library personnel
- To improve library service through skill development

We Promote:

- Better understanding and communication within individual communities and throughout the state
- Improved working relations in the library community
- Improved services to the library patron

Need WALE info?

<http://wale.wla.org/>

And become a WALE Friend on Facebook

Winter 2012

Page 1

2011 WALE Conference...

The WASHINGTON Library Employees (WALE) interest group observed its 20th Anniversary in **Roaring Twenties** style at the historic Davenport Hotel in Spokane, Washington, on Oct. 13 & 14, 2011. Approximately 150 conference attendees **Shared the Experience** of three motivating pre-conference workshops, twenty breakout sessions and four networking sessions.

Guest speakers included Spokane Mayor Mary Verner, Library Directors Pat Partovi and Mike Wirt, and Storyteller & Librarian David Wright. The WALE banquet on Friday evening was an unbelievable evening with keynote author J.A. Jance, the New York Times bestselling author. Jance shared personal stories along her journey as a writer and then closed with Janis Ian's iconic classic *At Seventeen*... a cappella and in its entirety, followed by a standing ovation.



The 2011 WALE conference committee is pictured with plenty of boas and feathers! The Davenport Hotel was a perfect and memorable setting to celebrate WALE's **Roaring 20's—Share the Experience** Conference.

WHAT'S NEW...

WALE is one of dozen interest groups within the Washington Library Association's organization. WALE members approved a slight revision of its acronym to **W**ASHINGTON **L**IBRARY **E**MPLOYEES, previously known as the Washington Association of Library Employees, at the recent WALE Conference.

WALE Officers

CHAIR—

Theresa Barnaby,
Richland Public Library

VICE CHAIR—

Laura Schmidt,
Mid-Columbia Libraries

SECRETARY—

Peggy Bryan,
Whitman County Library

COMMUNICATIONS—

Cindy Wigen,
Spokane Public Library

JOIN WLA / WALE

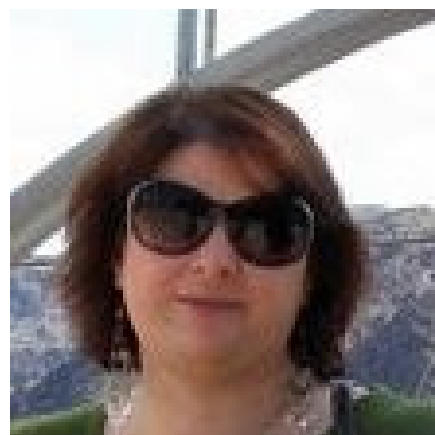
**Membership deadline
is February 24, 2012**

Benefits of your Membership:

- Legislative Advocacy
- Interest Group membership (1 free when you join WLA)
- WLA / WALE website and resources
- ALKI—WLA's journal with current & enduring issues & articles
- WLA & WALE Conferences for continuing ed & networking (with special member registration rates)

Meet our 2012 WALE Chair, Theresa Barnaby...

- **Where do you work?** Richland Public Library, where I started here right after college in 1992 (I think!) as the mail clerk. My current job includes Acquisitions, Circulation and Reference as well as maintaining the library website & Facebook page.



- **What is the best part of your library job?** The people! My co-workers are wonderful and very supportive. Working in a public library, you get to meet all sorts of interesting people – some more interesting than others!

- **How long have you been a WALE member?** I joined WALE in 1993.

- **What does WALE mean to you?** In 1993, after attending my first conference with Lisa Adams, Lisa and I were so excited about WALE we volunteered to work on the Speakers Committee. Over the years, I've volunteered for almost every conference committee there is. What WALE gives me is access to smart, passionate, enthusiastic people who love working in libraries and enjoy embracing the challenges we face in this ever changing field. It's a place that I can go to again and again when I have a question about how to do something, how to teach something, or just what something is. The annual conference rejuvenates me and gives me ideas on how to handle different situations. I can't stress enough how valuable WALE is to my professional and personal life. The friends I've made at the various conferences have become life-long friends!

- **Best book you read in the last year?** My 2011 pick was Deborah Harkness' *A DISCOVERY OF WITCHES*. History, magic, alchemy, romance along with witches and vampires --- what more could you ask for?

- **Best movie in the last year?** *THOR*. Chris Hemsworth. Enough said.

- **Favorite travel destination in Washington State?** Kalaloch Lodge. My family used to go there every Thanksgiving, and it is still my favorite place to go to get completely away from everything.

- **Favorite travel destination outside of Washington State?** The town I was born in – New Orleans. No matter where I live or how long I've been away, New Orleans is the home of my heart. The food, the music, the people, I love it all.

- **Favorite tunes?** Black Crows *Shake Your Money Maker* ; Leonard Bernstein's *Mass* ; Queen *It's a Kind of Magic* ; *Jesus Christ Superstar* original cast recording ; Dr. John any of his albums. This list changes quite frequently however!

- **Words to live by?** "One of the advantages of being disorganized is that one is always having surprising discoveries." -- A. A. Milne

UPCOMING CONFERENCES:

* April 18-20, 2012
WLA Conference,
One Tribe: Bringing Washington's Libraries Together, at Tulip Resort & Conference Center

* Aug. 1-3, 2012
PNLA Conference (Alaska),
Into the Wild: Surviving & Thriving in Uncertain Times, at Sheraton Anchorage Hotel & Spa

* Oct. 29-31, 2012
WALE Conference,
Coming of Age...21 Years as an Interest Group, at Campbell's Resort, Chelan

2012 CONFERENCE COMMITTEE

Conference Co-Chairs
Brianna Hoffman
Daurice Siller,
Richland Public Library

Speakers-Prog Co-Chairs
Lisa Adams
Jennifer Fenton

WLA Prog Coordinator
Kate Laughlin

Local Arrangements
Georgette Rogers

Vendor Chair
Laura Schmidt

Volunteer Coordinator
Bobbie Dimiero

Interested in joining the Conference Planning Committee? Email: dsiller@ or bhoffman@ richland.lib.wa.us



Thank you to our Past WALE Chair, Georgette Rogers...

- **Where do you work?** I am the Circulation Supervisor at the Liberty Lake Municipal Library and have been there for 8 years!
- **What is the best part of your library job?** Working with the public, learning new things all the time and being part of the Lead Team.
- **How long have you been a WALE member?** 8 years
- **What does WALE mean to you?** A great network and learning opportunity.
- **Best book you read in the last year?** *The Best of Me* by Nicholas Sparks
- **Best movie you saw in the last year?** *Harry Potter and the Deathly Hallows Part 2*
- **Favorite travel destination in Washington state?** Fort Spokane Campground
- **Favorite travel destination outside of Washington state?** I don't travel a lot but two of my favorite places, San Antonio Texas and South Dakota (where my family is).
- **Favorite tunes?** Classic Old time Country
- **Words to live by?** Live, Laugh Love and enjoy life!

Mark your calendars and plan to attend the 2012 WALE Conference, **Coming of Age...21 Years as an Interest Group**, this October at Campbell's Resort in Chelan, Washington.

